



## Software in some clicks...

Choice of the number of Column Visible

Visual filtering by Service, Team, Resources...

Direct access to a date

Time Bar Click to zoom Easily

Feature ribbon providing remarkable usability

Les tâches planifiées

Style Parameterized

Choice to view the Customer or The Designation

Resources, Material, Room, Vehicles, Tasks to Plan...

Visualization in Calendar mode

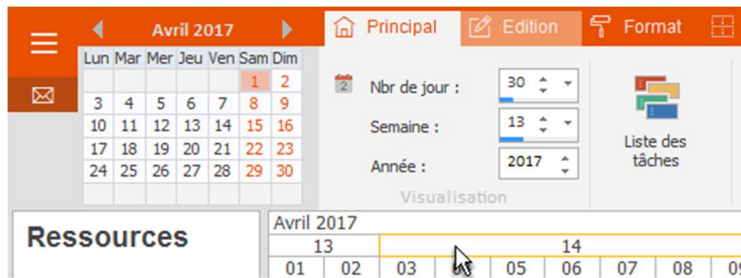
Ability to view The beaches Horizontal Schedules or Vertical



# Planning Pro

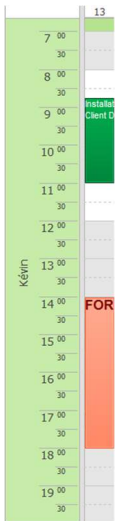
## Planning

Move through the Calendar by clicking directly on a day. ▶

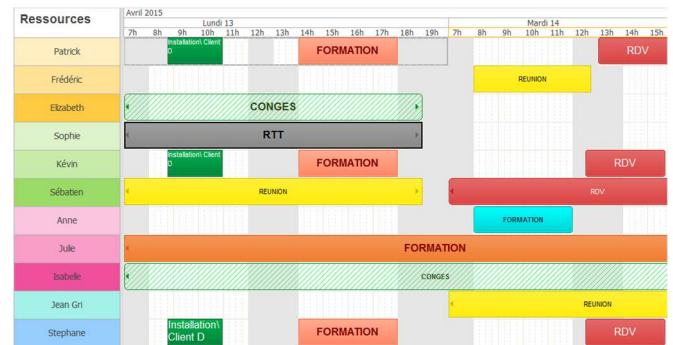


◀ You can choose the number of days visible on the screen (from 1 to 92 day)

You move from week to week, or from day to day...

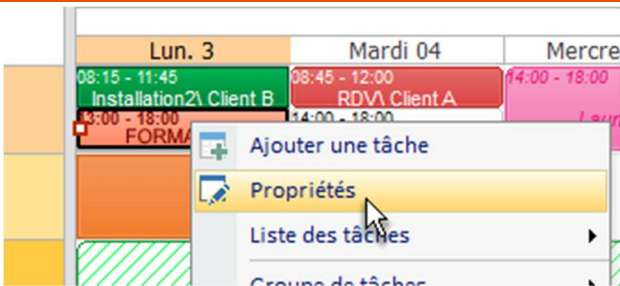


From 1 to 2 days, the schedule changes display mode and details the hours. ▶



◀ By clicking on the resources we go into calendar mode on the number of days you want

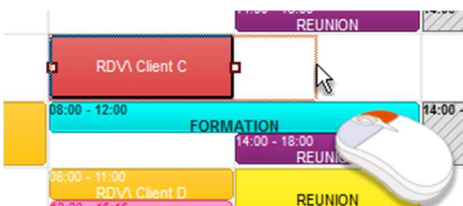
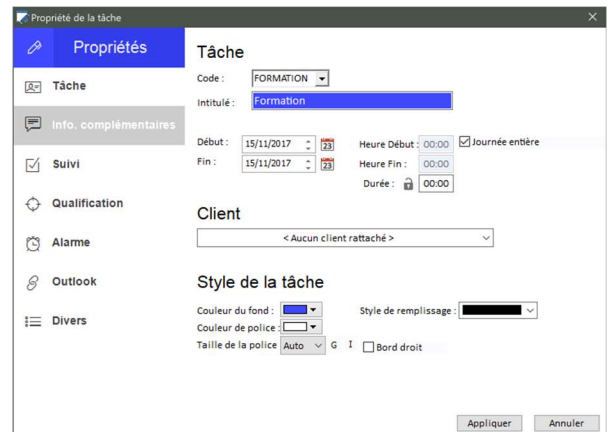
## Les Tâches



◀ Right click on a cell to choose whether to add a task or view the detail of an existing one

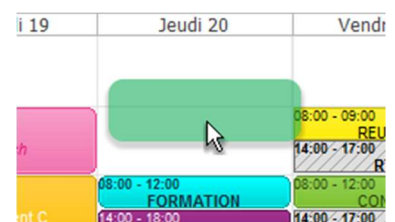


In this window, you can register multiple tasks, assign a visual style to each task... ▶



◀ The mouse you can extend a task over several days.

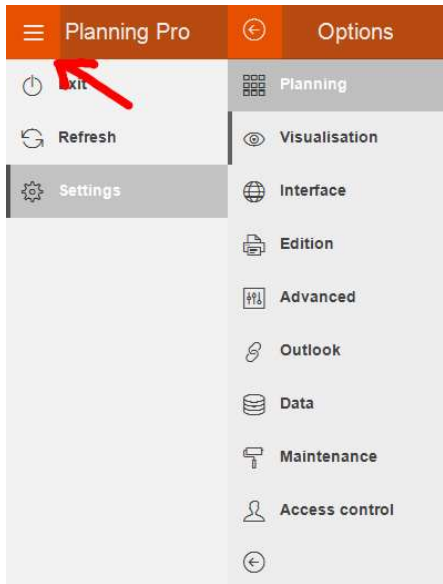
Moving the tasks is done directly to the mouse by keeping the left button depressed. ▶





# Planning Pro

## The settings



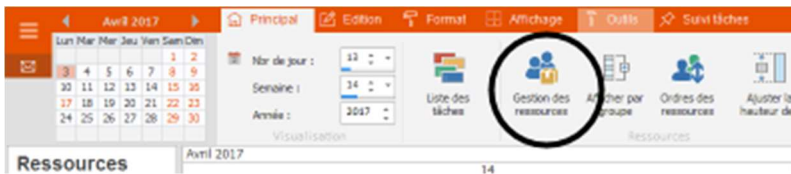
◀ Choice of hours worked per day, country for holidays, general hours of your business, etc...



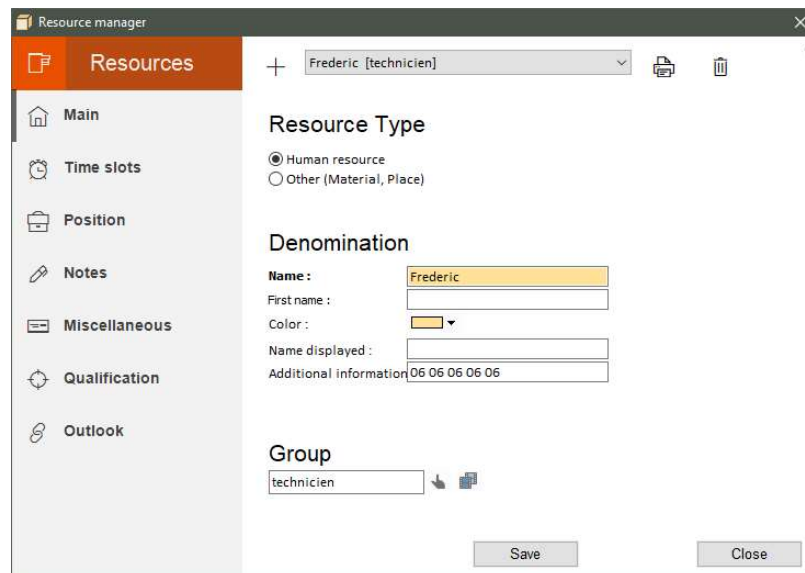
### Hours per day



## Les ressources (personnel, matériel, salle...)



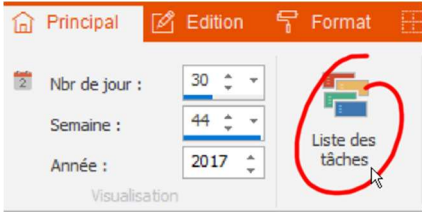
◀ Manage the different planning resources  
Their name, color, specific times...



- the resource to one or more groups to display your resources by 'services' in the schedule
- Find in this interface different other features

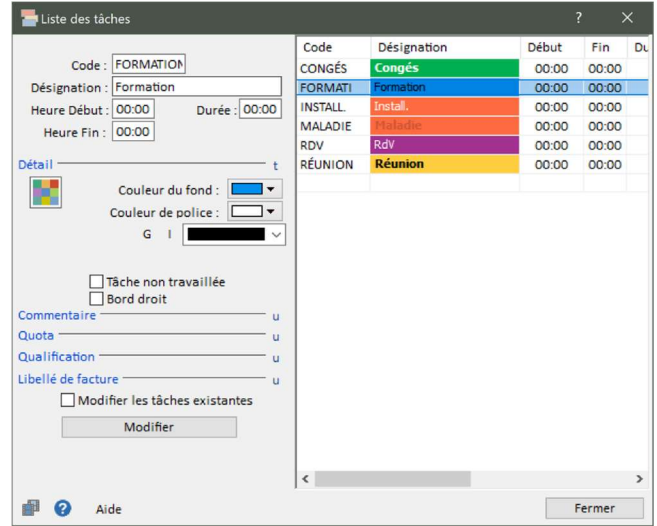


## Working with the Task list



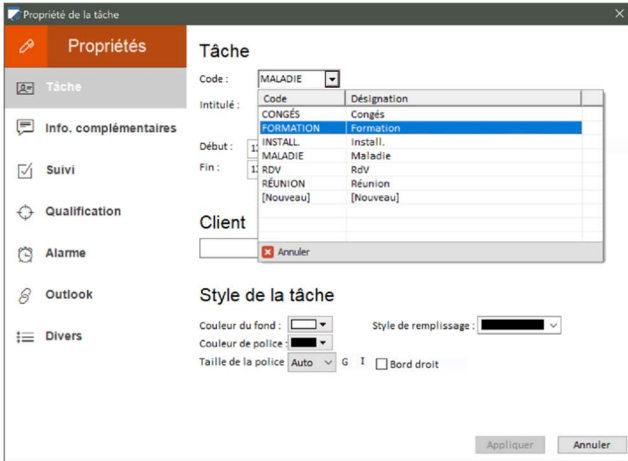
◀ Create repetitive tasks, specify whether they are worked or not (leave is not worked for example..).

You can preset the hours and assign a task to a default skill to warn you that an employee may or may not be doing this task.▶

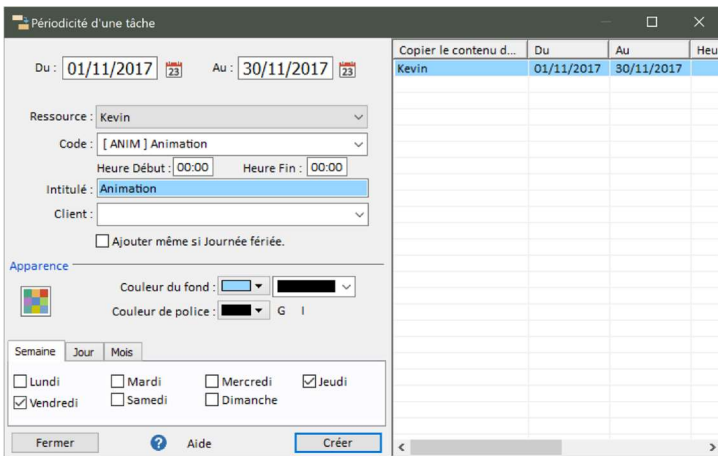


◀ You will then find in the detail of a task the list of codes...

- A task outside the employee's hourly range or in default of the company's time will be counted as "off-hour hours".
- If no time is specified, the software will use the employee's schedule or the company's default.



## Automatism : Periodicity



◀ Select the employee concerned, enter the task or use a code, specify the start and end dates.

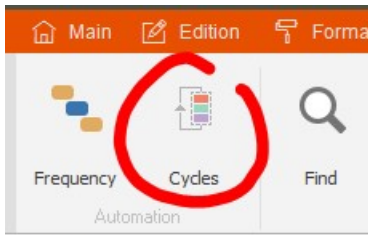
Choose how to repeat this task as fixed days each week or as in this example a task that lasts 2 days every 7 days.





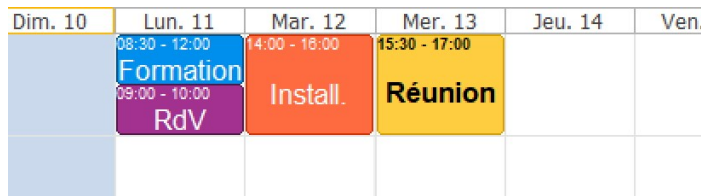
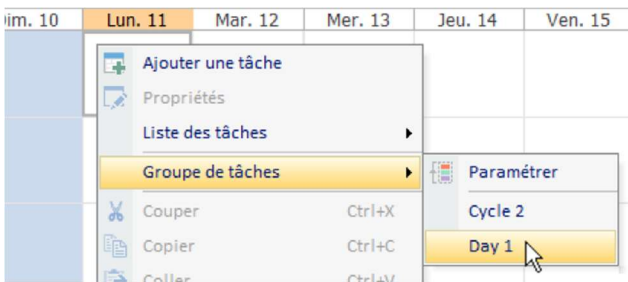
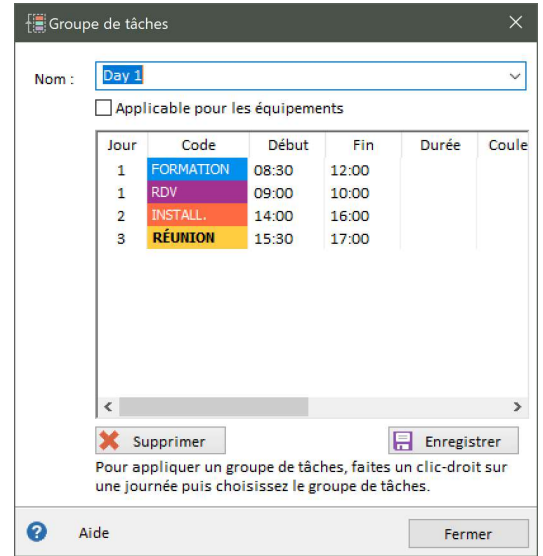
# Planning Pro

## Automatism : Cyclical tasks

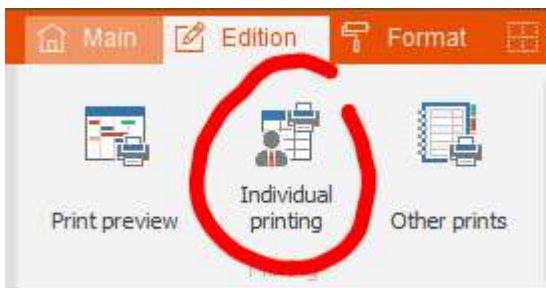


◀ Create your cycles that are a succession of tasks worked or not.

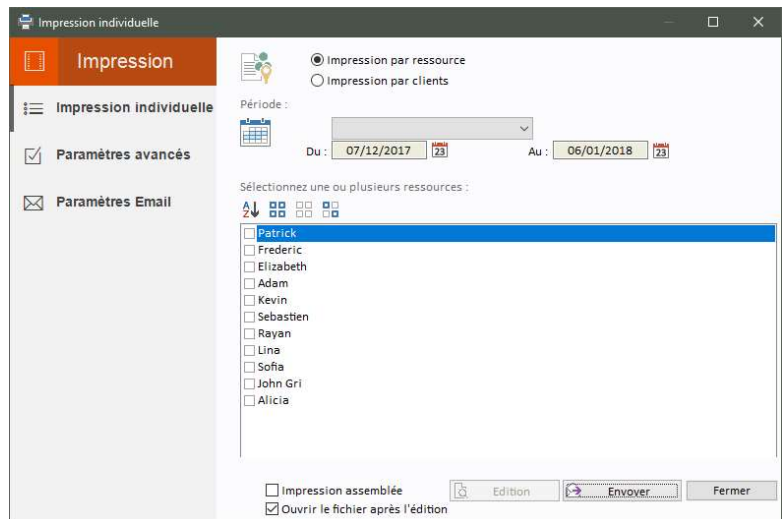
In the right screen, the user to create a cycle that he called "Day 1" and then set that day 1 is training, day 2 the appointment task (see task List) etc... ▶



## Individual printing



◀ This function allows to edit the schedules for each employee or client (room/site according to the translation in PDF format)



You can add your header logo and email the schedule directly!





## Calculating hours

Calcul des heures

Calcul à l'heure Options

Ressource : \* Toutes les ressources \*  
Groupe : A

Client : [dropdown]

Date : Du : 13/11/2017 Au : 19/11/2017

Code	Désignation	Heures	Hors plage horaire
INSTALL	Install.	8,00 h	-
FORMATION	Formation	8,00 h	-
CONGÉS	Congés	-8,00 h	-
RDV	RdV	1,00 h	-

Total d'heures

Nombre d'heures normales :	17,00
Nombre d'heures hors plages horaires :	0,00
Total d'heures :	17,00
Heures non travaillées :	8,00

A detailed report per day can also be established and directly usable in Microsoft Excel! ►

◀ The calculation of hours is only done on tasks using codes!

➔ Select a specific employee or all employees and choose a period of calculation...

➔ Codes defined as "not worked" will be negatively accounting.

➔ The result can be given in hours or days!

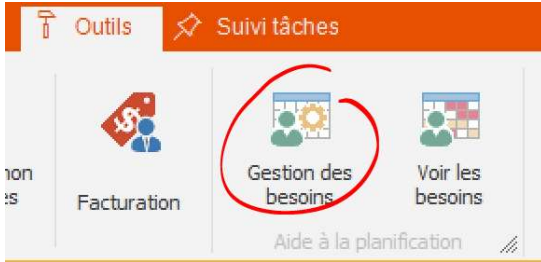
➔ can be assigned to the codes.

Code	13/11	14/11	15/11	16/11	17/11	18/11	19/11	Total
ANIM								0
CONGÉS		8						8
FORMATION		8						8
INSTALL			8					8
MAINT								0
RDV			1					1
RECUP								0
RTT								0
RÉUNION								0
Total	0	16	9	0	0	0	0	0



# Planning Pro

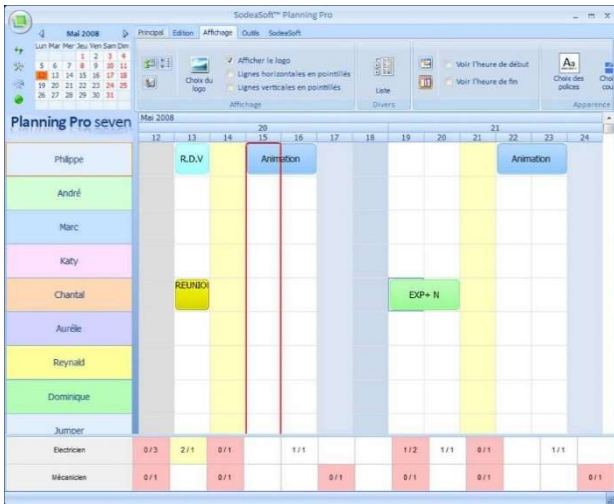
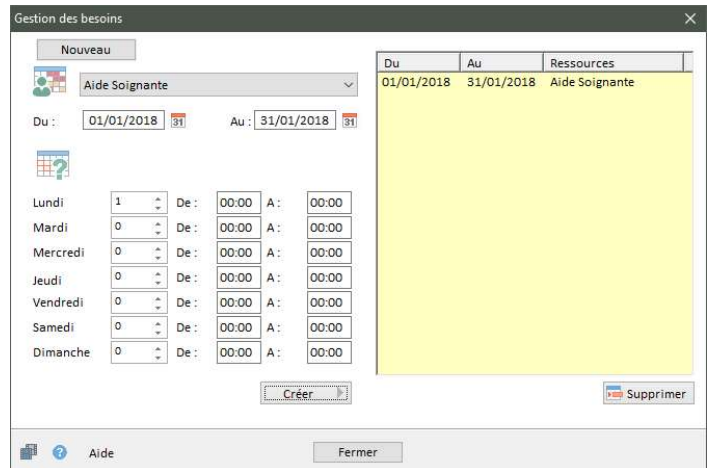
## Planning assistance



◀ This is to indicate the lack or the overstaffing by qualification required.

Qualifications can also be defined directly in a staff card.

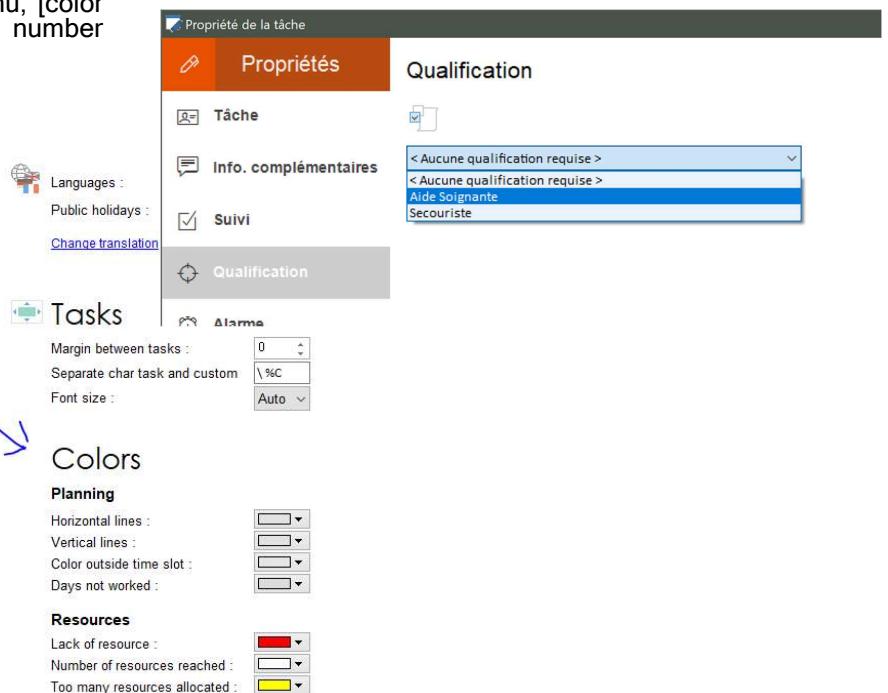
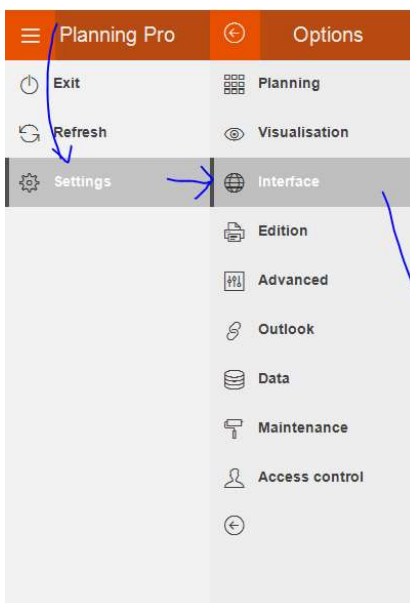
Select a qualification, choose a period and then indicate how many people need to be required per day. ▶



◀ A grid appears indicating each day the number of persons (qualification) in relation to the required number.

If an employee has more than one qualification, one can then indicate that a task of his day is to be counted for a particular qualification ▼

Colors can be set from the [Display] menu, [color selection] for overruns, misses or the number reached. ▼





## HTML option

### How do I get my schedule on the Internet?

With the HTML option of the SodeaSoft® planning Pro software, you can generate the website of your schedule. The goal is multiple, so you can make your collaborators benefit your inter-net or remote from your scheduled tasks some are their number and wherever they are in the world without notion of royalty!

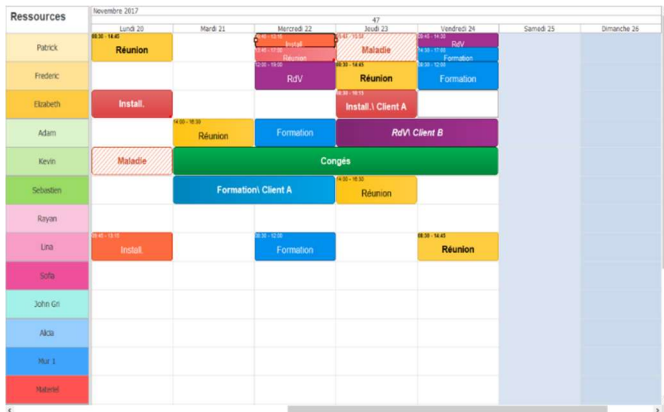


Figure 2 from the Software



Figure 1 from your browser

Here is an example: <https://www.sodeasoft.com/planning-pro/planning-internet-avec-option-html-du-logiciel>

- Creating real HTML-encoded pages
- Ability to automate the generation of HTML pages
- Additional task information appears in a helper balloon
- Choosing the Export Path
- Ability to display the job-related client in the label
- Choix du nombre de semaines à exporter
- 1 page HTML = 1 week
- Ability to export as a client's schedule tasks.
- data server or database needed!

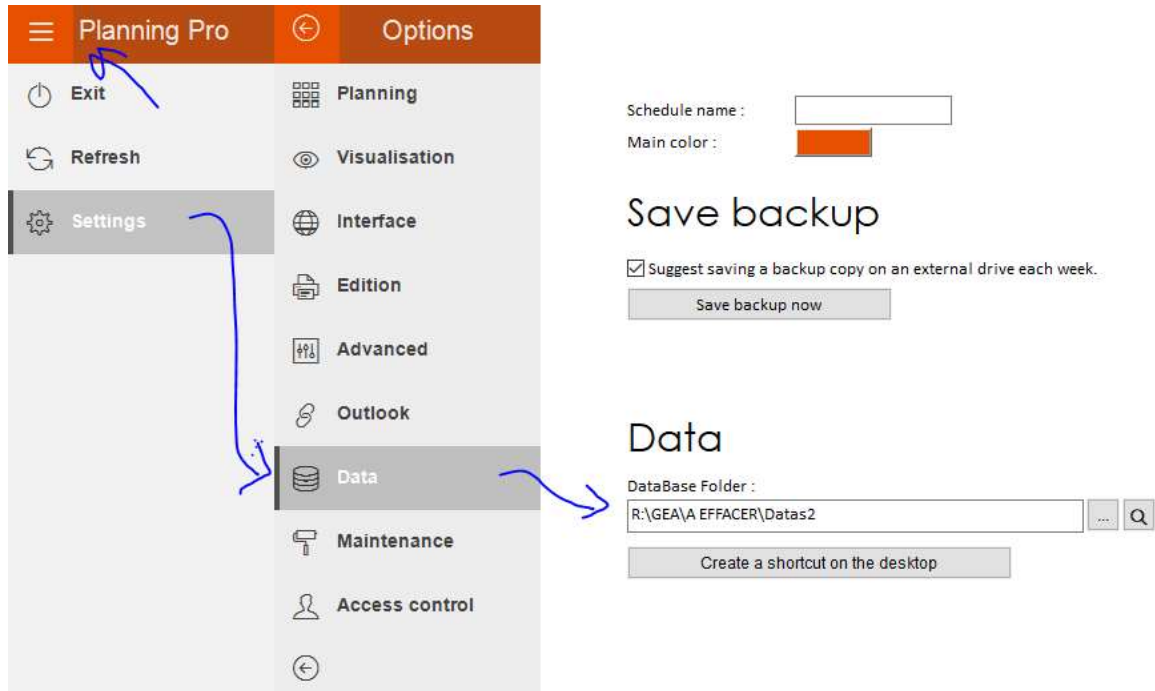
The HTML option is an optional module of the SodeaSoft® Planning Pro software. It can be ordered after purchase or when buying.



# Planning Pro

→ Planning Pro works in Ethernet Network and allows for collective work

All it takes is for each PC equipped with Planning Pro to point to the same shared folder where the database is located:



Find out more by contacting us:

**EBLM - SodeaSoft**  
978 Chemin de Jérusalem  
62110 HENIN-BEAUMONT  
France

**Commercial Service:**

Par téléphone : +33(0) 3 66 72 04 80  
<https://www.sodeasoft.com>

**Technical Support by mail:**

From your customer area at <http://support.sodeasoft.com>  
courrier@sodeasoft.com